



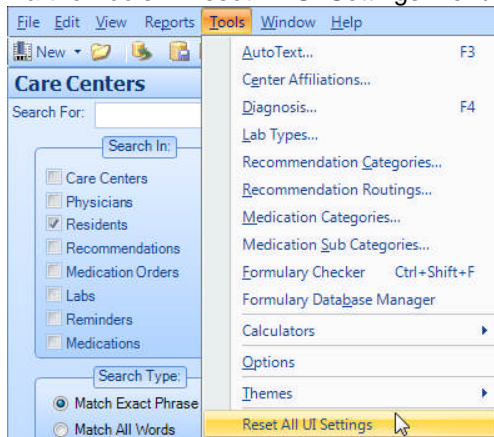
An MHA Solution

RxPertise™ Consulting Software, Version 8.0 Hotfix 001 Installer instructions

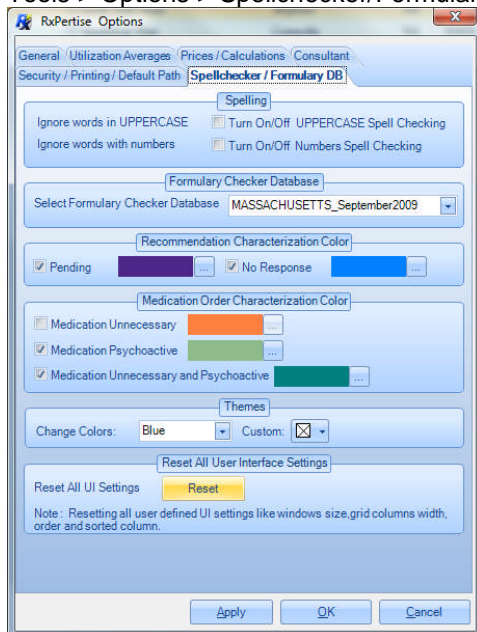
12/10/09

Release Notes: This Hotfix, meant to be installed on a computer system *already running version 8.0*, will provide version **8.0.3623.30482** and the following solutions:

1. The default recommendation routing as set in Tools > Options will be properly saved.
2. The F4 hotkey to access and insert diagnoses in the resident's diagnosis grid will function correctly. Additionally, if the diagnosis key is entered in the diagnosis grid, selected, and F4 is pressed, the full description of the diagnosis will be auto-populated.
3. **New feature:** Resetting the user interface (UI) settings back to default may now be done via the Tools > Reset All UI Settings menu option:



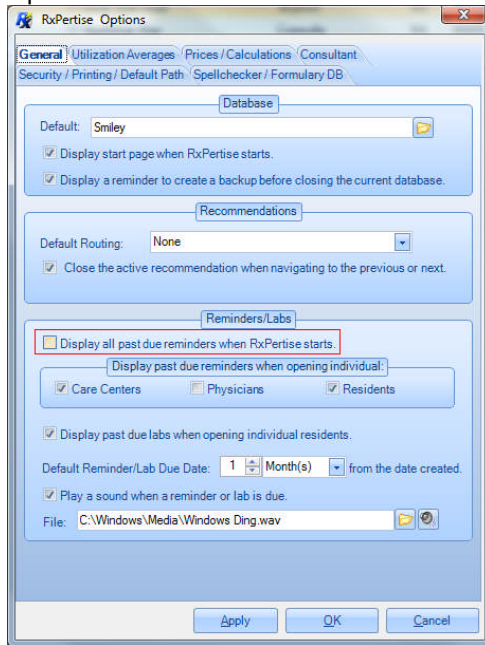
Tools > Options > Spellchecker/Formulary DB continues to function similarly:





An MHA Solution

4. Default setting for displaying all past due reminders is now set to “off” under Tools > Options:



5. The spellchecker will insert the corrected word at the cursor point, and not the beginning of the field.
6. Display of Autotext (F3 hotkey) is much more rapid than before.
7. Duplicated recommendations may now be routed to a different recommendation routing than the original routing.
8. Import/Export properly reconciles and displays the last recommendation date if more than one colleague updates that resident record.
9. The Order Changes datagrid now displays the following when the datagrid is accessed, and changes made to the datagrid are more predictably retained:

Order Changes:

	OrderType	MedType	Action	Number
▶*	Not Selected	Not Selected	Not Selected	

10. Merging of residents will combine data from Allergies and Additional Resident Information, in the event that both residents have valid data in these fields.
11. The Formulary Checker navigation has been improved.
12. **New feature:** Entering data in any date field in v8.0 will now auto-move to the next date field to reduce keystrokes (ex. entering the month will auto-move to the date, and entering the date will auto-move to the year).
13. **New feature:** QS1 users that take advantage of the multiple-sig option for a given Rx order will have all of the sigs imported into the RxPertise medication order. Previously, only one of the sigs would display in the medication order. **NOTE:** QS1's version 19.1.3 release will provide an updated Output Format 4 automatically. This release is scheduled by QS1 for late November/early December 2009.



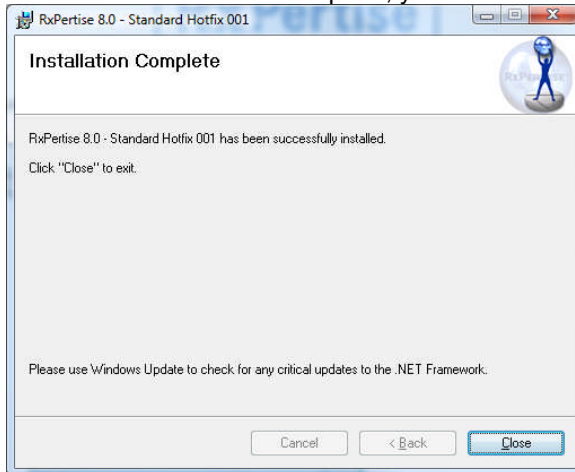
Installation instructions:

NOTE: If you are installing v8.0 for the first time, the full installation image will automatically include this Hotfix. This file is only necessary for those clients already running v8.0.

1. Download the Rx80StdPatch.MSI from our web site at www.rxpertise.com/downloads.html.
2. Exit out of v8.0 if it is currently running.
3. Double click the file to start the installation. Follow the prompts as indicated.



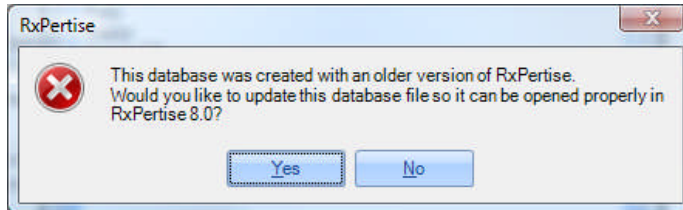
4. When the installation is complete, you will see:



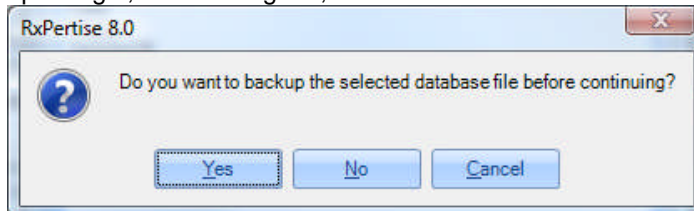
5. If you have not installed any hotfixes since v8.0 was installed on your system, each of your v8.0 databases will need to undergo a one-time update after the Hotfix is installed. If you have installed any hotfix from 11/09, there will not be any such database update requires. In the former scenario, when you open a v8.0 database, you will see:



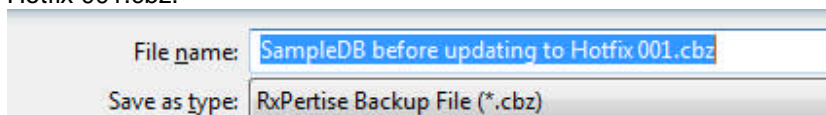
An MHA Solution



Choose Yes. You will then be prompted to make a backup of the database before updating it, which is a good, common-sense measure to take.

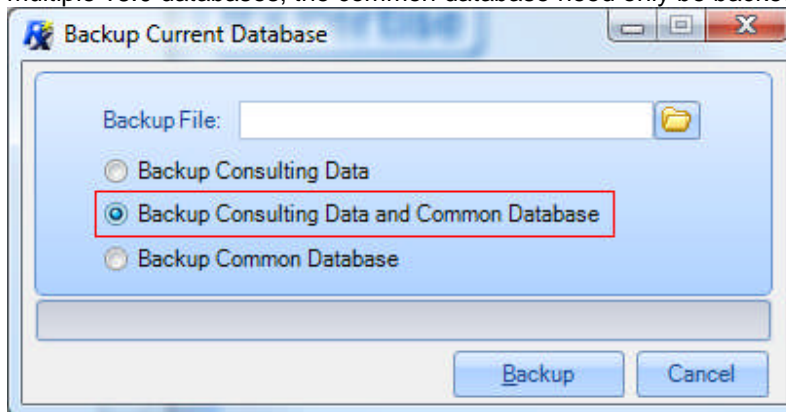


Be sure to uniquely name this database backup (vs. simply overwriting an existing backup). An example of such a backup name would be "SampleDB before updating to Hotfix 001.cbz."

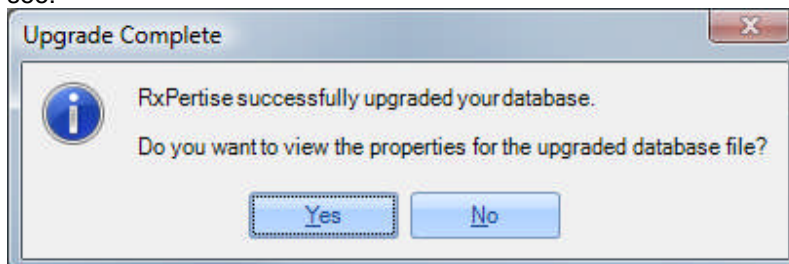


Save as type: RxPertise Backup File (*.cbz)

- As with other v8.0 backups, you'll then be prompted to select the backup option. We recommend you backup both the consulting data and the common database. If you have multiple v8.0 databases, the common database need only be backed up once.



- After the backup is completed, the v8.0 database will be updated. When complete, you'll see:



Choose Yes if you wish to view the properties, or No to get back to work.



An MHA Solution

8. You're done! Thank you for your continued support of RxPertise.